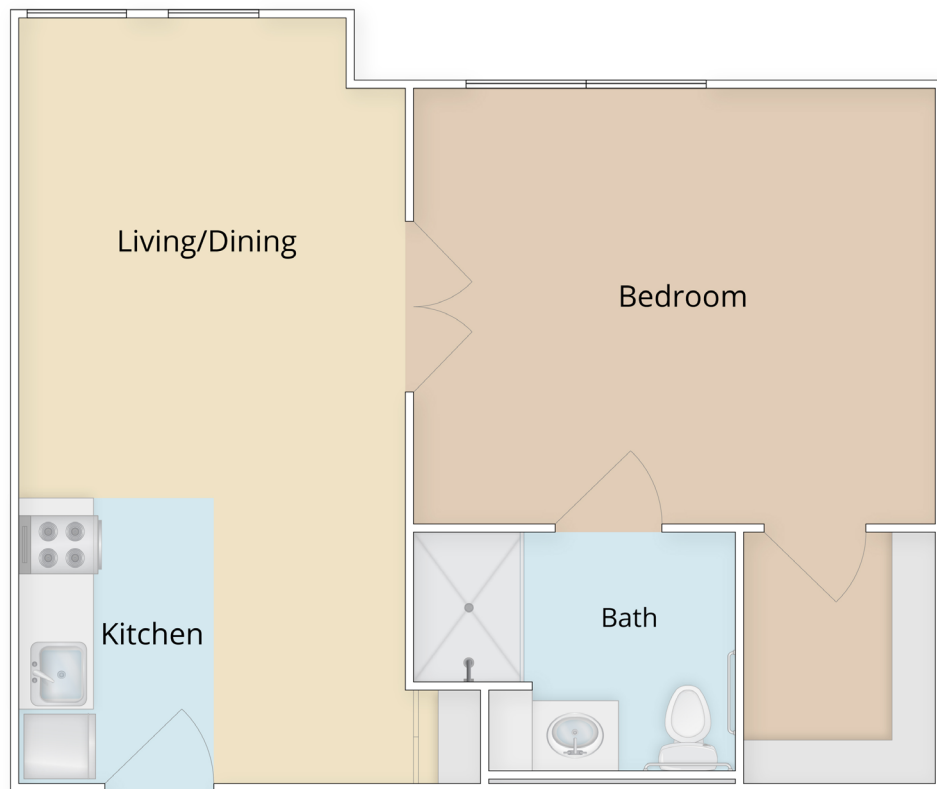


# Memory Care 1 Bedroom Apartment

Kitchen | Living/Dining | 1 Bedroom | 1 Bath



Apartment Number \_\_\_\_\_

Monthly Rent \_\_\_\_\_

Entrance Fee \_\_\_\_\_

## Memory Care Rates Include:

- Rent
- 3 Chef Inspired Meals/Day
- Daily Life Enrichment Program
- Group Outings
- Utilities, Phone, Cable, WiFi
- Weekly Housekeeping
- Weekly Laundry
- Emergency Pendant

\*SAMPLE UNIT. ACTUAL APARTMENTS MAY VARY. FLOOR PLAN SQUARE FOOTAGE, DIMENSIONS, AND SCALING ARE APPROXIMATE.

*New Perspective*  
**SENIOR LIVING**  
LIVING LIFE ON PURPOSE®

750 Mississippi River Blvd., St. Paul, MN 55116



**651-504-3449** | [npseniorliving.com](http://npseniorliving.com)

# 1 Bedroom Apartment

Kitchen | Living/Dining | 1 Bedroom | 1 Bath

Apartment Number \_\_\_\_\_

Monthly Rent \_\_\_\_\_

Entrance Fee \_\_\_\_\_

- Rent
- 3 Chef Inspired Meals/Day
- Daily Life Enrichment Program
- Group Outings
- Utilities, Phone, Cable, WiFi
- Weekly Housekeeping
- Weekly Laundry
- Emergency Pendant

\*SAMPLE UNIT. ACTUAL APARTMENTS MAY VARY. FLOOR PLAN SQUARE FOOTAGE, DIMENSIONS, AND SCALING ARE APPROXIMATE.

*New Perspective*  
SENIOR LIVING



750 Mississippi River Blvd., St. Paul, MN 55116

651-504-3449 | [npseniorliving.com](http://npseniorliving.com)