

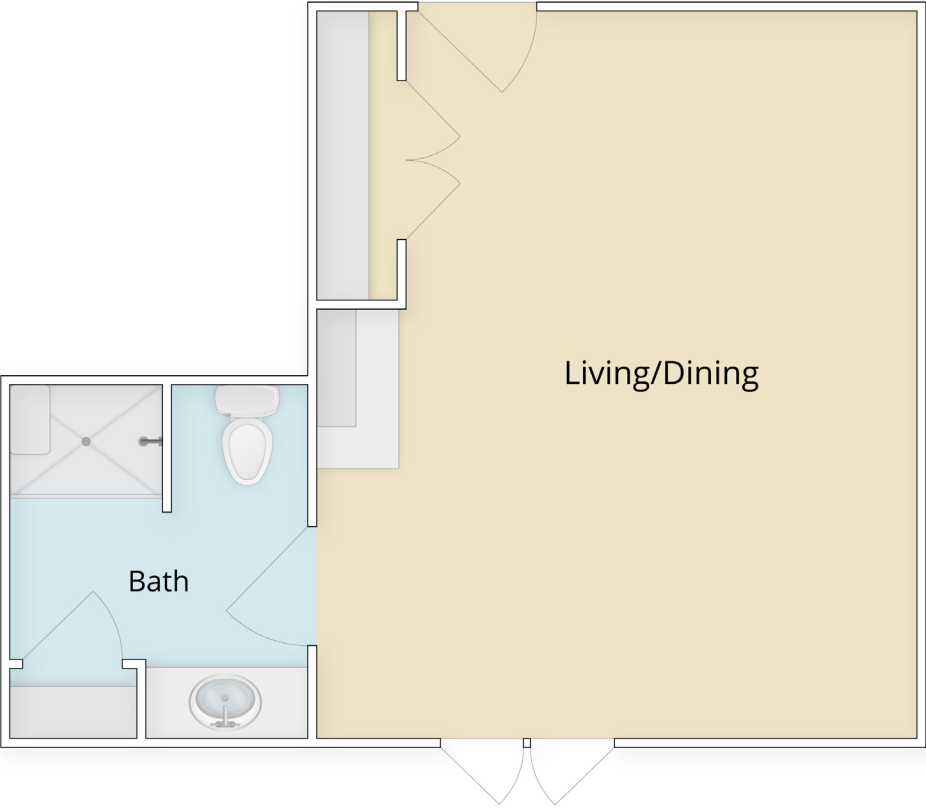
# Studio Apartment

Living/Dining | 1 Bath

Apartment Number \_\_\_\_\_

Monthly Rent \_\_\_\_\_

Entrance Fee \_\_\_\_\_



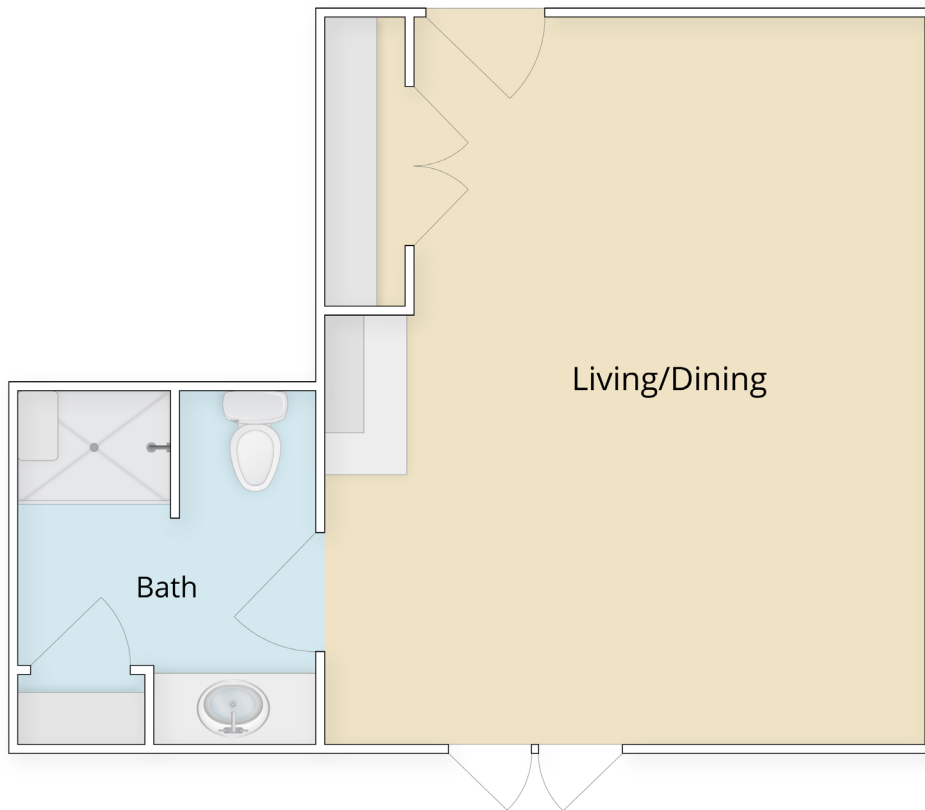
### Assisted Living Rates Include:

- Heat/Water/Electric
- 3 Meals/Day
- Weekly Housekeeping
- Kitchenette
- Service Pendant
- Basic Cable

\*SAMPLE UNIT. ACTUAL APARTMENTS MAY VARY. FLOOR PLAN SQUARE FOOTAGE, DIMENSIONS, AND SCALING ARE APPROXIMATE.

# Memory Care Studio Apartment

Living/Dining | 1 Bath



Apartment Number \_\_\_\_\_

Monthly Rent \_\_\_\_\_

Entrance Fee \_\_\_\_\_

## Memory Care Rates Include:

- Heat/Water/Electric
- Basic Cable
- Weekly Housekeeping
- RN Care Management
- 3 Meals/Day

\*SAMPLE UNIT. ACTUAL APARTMENTS MAY VARY. FLOOR PLAN SQUARE FOOTAGE, DIMENSIONS, AND SCALING ARE APPROXIMATE.

*New Perspective*  
**SENIOR LIVING**  
LIVING LIFE ON PURPOSE®



3733 Horizon Drive, Barnum, MN 55707  
**218-729-2215 | [npseiorliving.com](http://npseiorliving.com)**